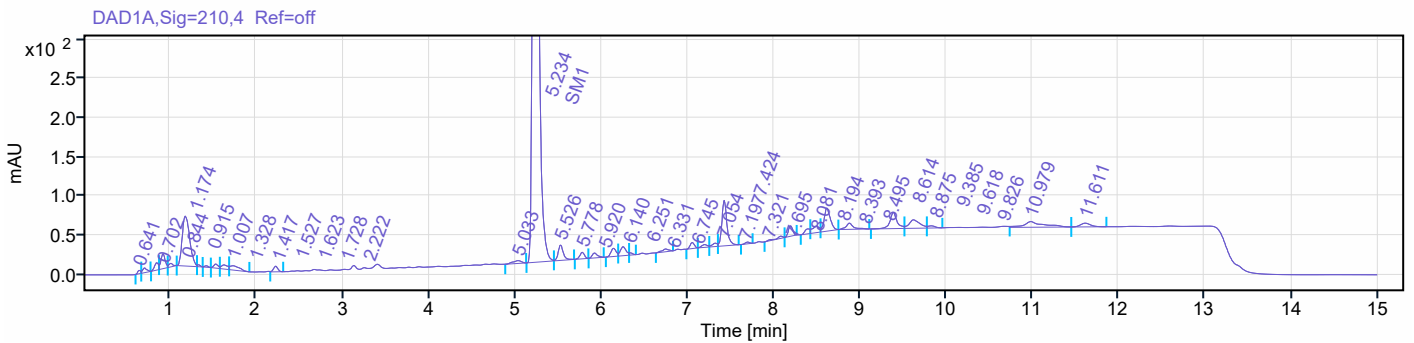
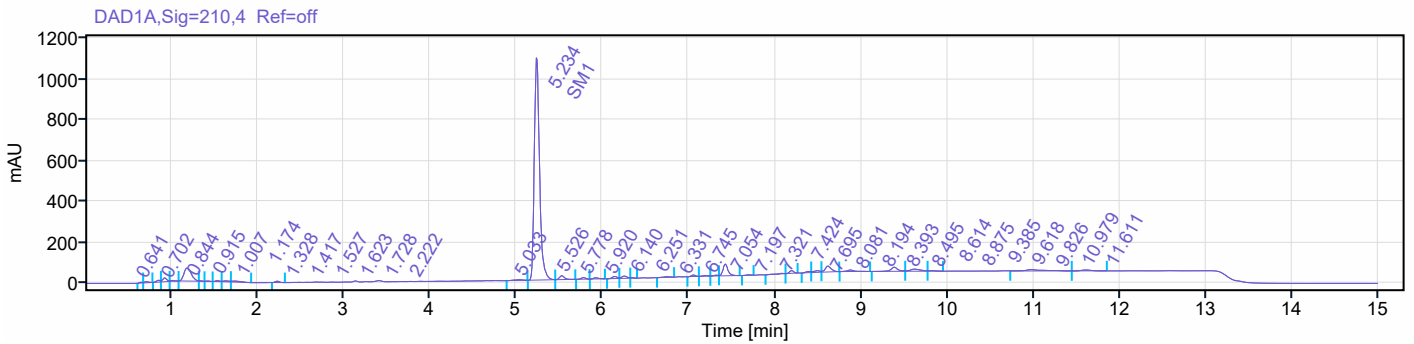


Single Injection Report

Sample Name: C2021236-SM1-H221655-008-IPC2 **Project Name:** C2021236
Acq. method: A0-3.amx **Operator:** liuting
Processing method: *A0.pmx **Location:** P1-A2
Instrument: CM-ARD-HPLC-11 **Injection date:** 2022-07-06 15:09:36+08:00
Processing Date: 2022-07-06 15:27:55+08:00 **Inj. volume:** 1.0 µL
Run Time: 15.0
Data File Directory: /non-GMP/CDMO/C2021236/Results/2022/Jul/20220706/CM-ARD-HPLC-11-20220706
 134616.rslt



Signal: DAD1A, Sig=210,4 Ref=off

No.	Name	RT [min]	Area [mAU*min]	Height [mAU]	Plates USP	Tail Factor USP	Resolution USP	Area [%]
1		0.641	10.14	4.22	1172	0.98		0.15
2		0.702	20.69	5.93	928	1.33	0.80	0.31
3		0.844	29.43	9.24	1033	0.78	1.42	0.45
4		0.915	65.20	18.76	1488	1.07	0.73	0.99
5		1.007	14.41	4.42	1724	1.57	0.90	0.22
6		1.174	384.54	63.69	853	1.21	1.34	5.84
7		1.328	5.57	2.34	2151	1.29	1.11	0.08
8		1.417	4.93	1.78	5654	0.94	0.91	0.07
9		1.527	18.09	5.08	3556	0.99	1.20	0.27
10		1.623	26.81	5.17	999	1.10	0.65	0.41

Single Injection Report

No.	Name	RT [min]	Area [mAU*min]	Height [mAU]	Plates USP	Tail Factor USP	Resolution USP	Area [%]
11		1.728	41.42	5.41	513	1.87	0.39	0.63
12		2.222	24.59	7.07	9230	0.95	2.52	0.37
13		5.033	24.18	3.52	10212	0.98	19.24	0.37
14	SM1	5.234	4650.26	1095.72	36825	1.37	1.30	70.63
15		5.526	80.36	19.48	44439	1.89	2.74	1.22
16		5.778	30.12	8.26	56008	1.13	2.50	0.46
17		5.920	26.35	6.19	46620	1.63	1.35	0.40
18		6.140	43.11	10.39	44753	1.02	1.95	0.65
19		6.251	52.66	11.37	39413	1.10	0.94	0.80
20		6.331	7.42	2.84		3.67		0.11
21		6.745	18.61	3.46	43707	1.09		0.28
22		7.054	25.74	7.59	91924	1.26	2.76	0.39
23		7.197	15.58	3.46	49943	0.96	1.32	0.24
24		7.321	17.45	4.21	40988	0.74	0.88	0.27
25		7.424	236.41	57.91	84939	1.28	0.87	3.59
26		7.695	7.18	2.14	117140	1.17	2.85	0.11
27		8.081	14.40	2.68	120727	0.98	4.22	0.22
28		8.194	45.84	13.26	123193	1.32	1.14	0.70
29		8.393	24.59	6.25	20521	0.79	1.22	0.37
30		8.495	45.98	8.20	31462	0.78	0.50	0.70
31		8.614	146.83	29.36	69672	1.33	0.74	2.23
32		8.875	46.68	7.85	78090	1.61	2.02	0.71
33		9.385	118.08	20.65	82654	1.10	3.93	1.79
34		9.618	93.15	10.75	26331	1.24	1.27	1.41
35		9.826	15.83	2.69	21745	1.74	0.82	0.24
36		10.979	112.65	7.18	29750	1.46	4.43	1.71
37		11.611	38.43	4.69	47546	1.32	2.71	0.58